

One Pager – Experience Transfer

- Accident
- Near Miss
- Unsafe act/ condition

Location: Maersk Invincible

Time: 21:00

Date: 12.04.2017

Title: Discharge of preservation fluid overboard

Facts *(What happened)*

In connection with verifying the level sensors in trip tank 3 the tank had to be filled with fluid. It was requested to do this with environmentally friendly preservation fluid stored in pit 3. The trip tank had a faulty sensor which showed the wrong reading. This caused the trip tank to overflow into the overflow line. This line had an overboard line which was blind flanged. The blind-flange, which was installed by the yard in South Korea, had no gasket and the bolts were not tight. This caused 159 liters of fluid to be spilled to sea before the operator noticed.

Causes *(Why did it happen)*

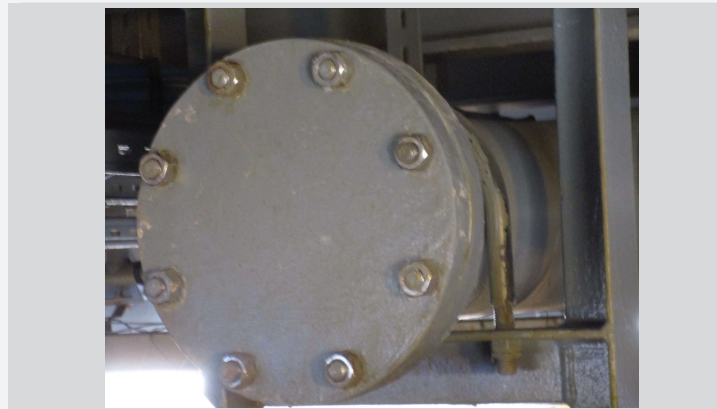
Faulty level sensor and blind flange not tightened correctly in the ship yard.

The operator had trained the CCTV camera to sea and hereby observed the spill. He also got suspicious and reacted fast when the level sensor froze/didn't change thereby limiting the spill.

Corrective measures/learnings

(What is done for remedial action)

When the Cantilever was skidded in, a gasket was installed and the flange properly tightened. The other blind flanges were inspected as well.



Barriers affected

- Plant/Equipment
 - 1 Level sensor
 - 2 Pipework
- Processes
 - 1
 - 2
- People
 - 1
 - 2

Investigation required

Yes No

Level _____

SIRIUS:

Work process: _____

Content Owner: _____

Revision Request raised

Revision number: _____

One Pager – Erfaringsoverføring

- Accident
- Near Miss
- Unsafe act/ condition

Sted: Maersk Invincible

Tid: 21:00

Dato: 12.04.2017

Tittel: Utslipp av konserveringsvæske over bord

Fakta *(hva skjedde)*

Under verifisering av nivåsensorer i trip tank 3 måtte tanken fylles med væske. Instruksjoner ble gitt om å bruke miljøvennlig preserveringsvæske fra pit 3. En sensor på trip tanken ga feil avlesning, noe som førte til at triptanken ble overfylt og overskuddsvæske gikk over til overflow line. Den linjen var blindflenset. Blindflensen, som var installert i Sør-Korea, hadde ingen pakning og boltene var ikke tette. Dette førte til at 159 liter væske gikk til sjø før operatøren oppdaget hendelsen.

Årsak *(hvorfor skjedde det)*

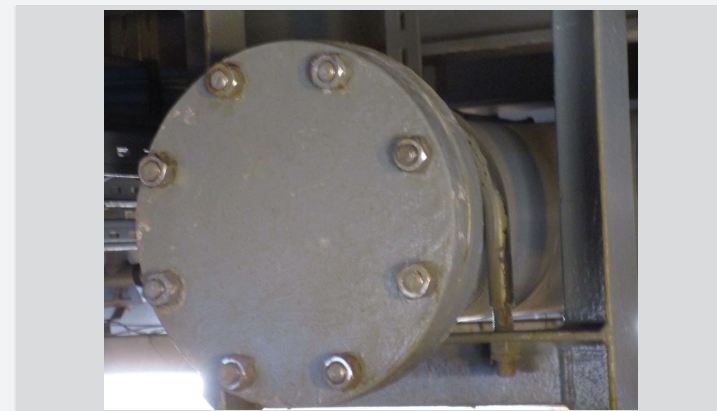
Feil på nivåsensor og blindflenser som ikke var strammet korrekt fra verftet.

Operatøren hadde CCTV kamera over sjø, og observerte utslippet via kamera. Han reagerte raskt når nivåføleren frøs/ikke endret verdi, og fikk derfor begrenset menden på utslippet.

Korrektive tiltak/lærepunkter

(hvilke forebyggende tiltak ble gjort)

Da cantilever ble skiddet inn ble en pakning installert og flensen strammet til ordentlig. De andre blindflensene ble også inspisert.



Berørte barrierer

- Anlegg & utstyr
 - 1 nivåsensor
 - 2 Rør
- Prosess
 - 1
 - 2
- Mennesker
 - 1
 - 2

Granskning påkrevd

Ja Nei

Level _____

SIRIUS:

Arbeidsprosess: _____

Eier av innhold: _____

Revision request sendt

Revision nummer: _____